

RO Membrane Housing (RA8) Instruction Manual



Content

© Notice	2 -3
© Know Your Product	4
© Instruction Manual.....	5-6

Notice

1. Please follow the instruction manual to install and carry out a test for the housing.
2. This product is designed for filter equipment and used for water filtration only. Please do not use for other purposes to avoid danger.
3. This product is classified as a pressure vessel, and only professional or mechanical specialists can install and operate it.
4. Please read through the instruction manual before moving, installation and operation.
5. Please check the product and make sure that there are no any damages or components missing before installation. If the product is damaged, deformed or leaking, please stop operation.
6. Please choose the right cartridge filters for the water system before usage.
7. Please follow design specification to operate and take attention on the design pressure and operating pressure range.
8. The filter housing must be installed and fixed on the flat ground. Please do not install on the vibration ground.
9. Please do not open the top cover before installation and piping.
10. It is suggested to attach pressure control valve to keep stable water pressure to avoid sudden pressure change and result of leakage.

11. It may cause filter housing damage under sudden turn on and shut down of ball valve.

Moreover, to prevent damage caused by excess flow and reverse flow.

12. Be sure to release the internal pressure of the filter housing completely before filter cartridges replacement. Please be cautious of fluid ejection during high temperature usage.

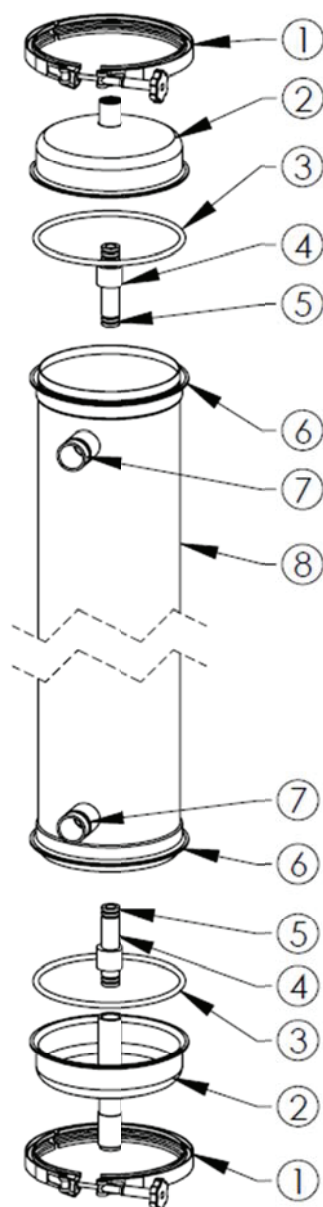
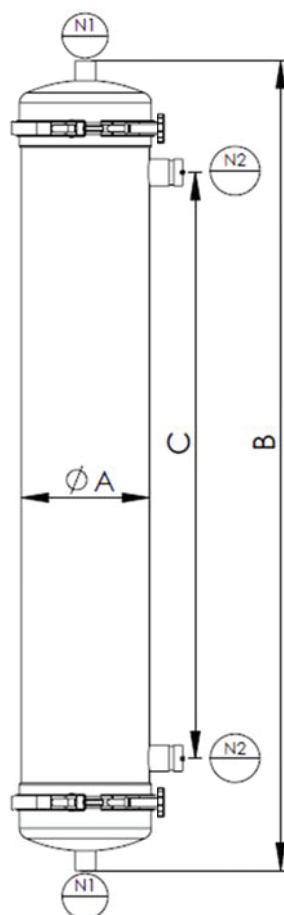
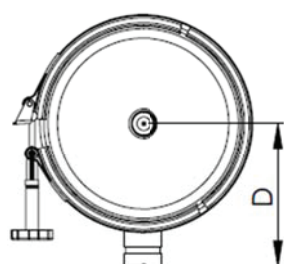
13. Please use the suitable O-ring and check it regularly. Please replace it if necessary.

Deterioration or damaged of O-ring may cause fluid leakage.

14. The internal plastics components will be deteriorated after long-term use. Please check it regularly and replace it if deterioration or damage is found.

Know Your Product

No.	Description	No.	Description	No.	Description
1	Clamp	2	RO Head	3	O-Ring
4	PVC Coupling	5	O-Ring	6	Shell Flange
7	Mechanical Joint	8	Shell		



Instruction Manual

1. Operate The Filter Housing And Install The Internal Parts :

- a. Complete Installation of ②RO Head and ③⑤O-ring
- b. Unfasten ①Clamp. Connect ②RO Head with the ④ top and bottom PVC couplings with inside membrane. Fasten ①clamp tightly. (If the connect point of membrane is hollow, please connect the ④PVC coupling with ②RO Head first.)
- c. The installation of internal membrane is done, connect another side ②RO head and shell, then close and fasten ①clamp tightly. Check if the top and bottom ②RO head and ①clamp are completely installed.

2. Fixing :

Install the RO housing assembly with equipment

3. Piping :

- a. Connect ②upper and bottom RO head with the main pipe (according to piping arrangement and flow direction)

4. Testing :

- a. Close the inlet and outlet, then open the vent (Choose one of ②RO Head as relieve pressure point)
- b. Pour in water until water comes out from vent then close the exhaust valve at vent.
- c. Keep the above step for 30 minutes and check whether there is leaking.

5. **Stop Leaking** :

- a. Please close inlet port valve while liquid leakage occurs.
- b. Please close outlet port and vent port valves. Then unfasten ① clamp and fasten it tightly again.
- c. Turn on inlet valve and add pressure gradually to check if leakage occurs.

6. **Stop Running** :

- a. To stop filtration operation, please close inlet and outlet ports first to stop the flow inside.
- b. Open the vent to release pressure slowly. To make sure internal pressure is released completely.
- c. Close the outlet and drain ports after pressure relieved, and the shell can be removed.